

8730

# Wilshire Boulevard beverly hills | ca

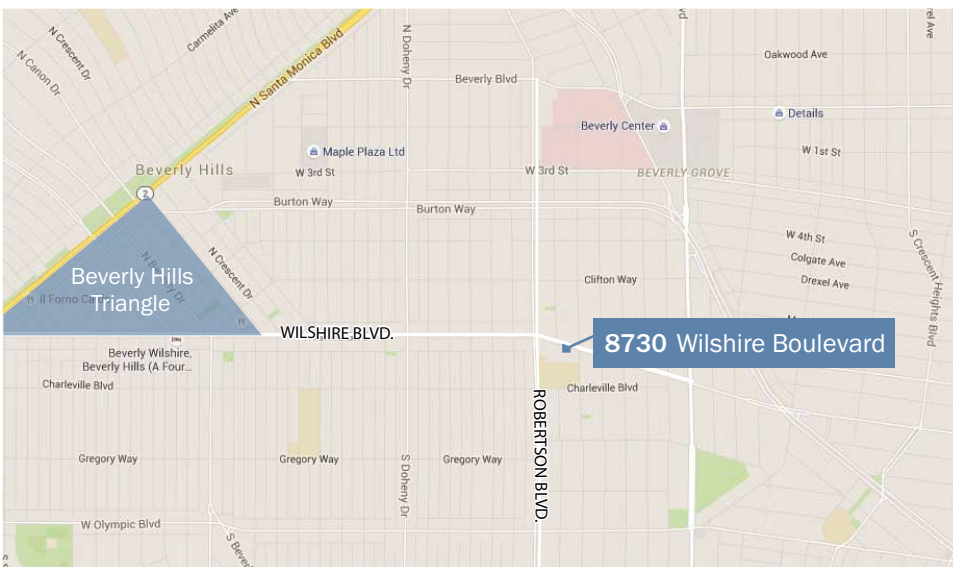
For Lease

## Office Space

Availability:	Suite 400 - 2,331 rsf Suite 540 - 1,170 rsf
Rental Rate:	\$3.65/Full Service
Annual Rental Increases:	3%
Term:	Negotiable
Parking:	2.5 spaces / 1,000 rsf leased Monthly rate is \$160 per space

### Building Description:

Located one block east of Robertson Boulevard, this 37,000 square foot, six-story building is in close proximity to the Beverly Center and the Beverly Hills "Triangle" area. The building's common areas were recently renovated.



For Leasing Information Contact:

Micheal Geller  
micheal.geller@jll.com  
License #00800010  
+1 310 486 1976

Ben Silver  
ben.silver@jll.com  
License #01818061  
+1 310 883 4311



8730

# Wilshire Boulevard

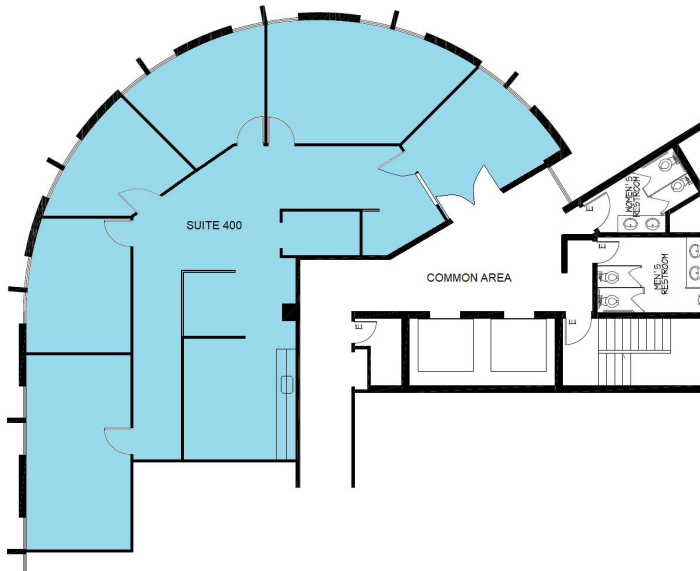
beverly hills | ca

For Lease

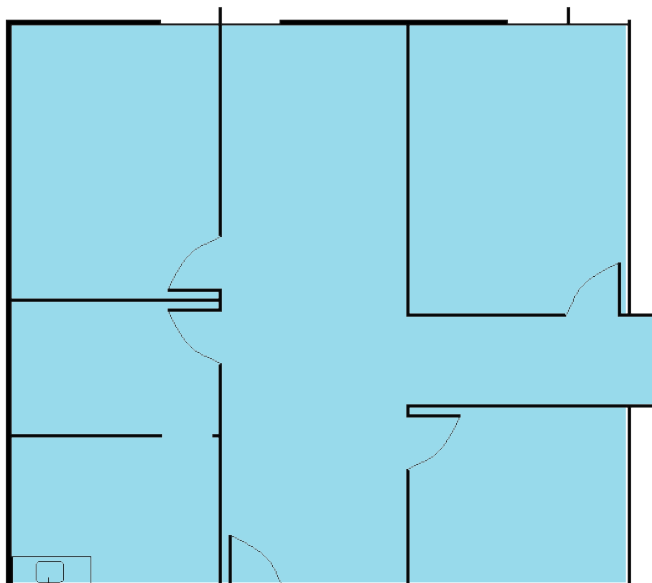
## Availability

Suite	Sq. Ft.	Rate	Available	Description
400	2,331 rsf	\$3.65/fs	Now	Double door entry off the elevator lobby, reception, conference room, 4 window offices, kitchen, storage.
540	1,170 rsf	\$3.65/fs	Now	Reception, 2 window offices, conference room, kitchen, storage.

### Suite 400 - 2,331 rsf



### Suite 540 - 1,170 rsf



8730

# Wilshire Boulevard

beverly hills | ca



## AREA DETAILS

- World class Beverly Hills shopping, dining and restaurants
- Excellent access to Cedar's Sinai Medical Center
- Numerous local restaurants within walking distance including Lazy Daisy, Gourmand, Bombay Palace, Tagine and Mari Cafe
- Convenient access to the 10 freeway via Robertson Blvd.
- Located on the Purple Line subway extension (completion 2025) that will run beneath Wilshire Blvd.

